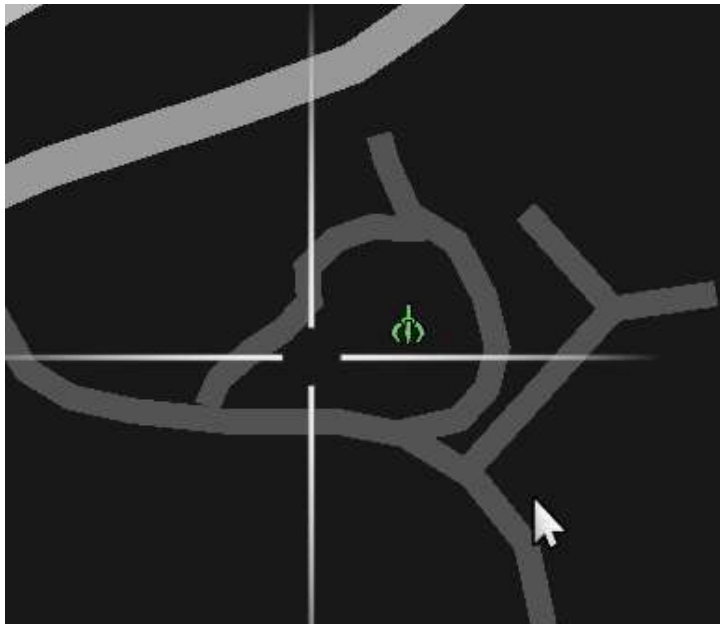




Quarry 8



7.10 Sawmill

Green - parking is allowed for everyone;
Everywhere else - no parking.

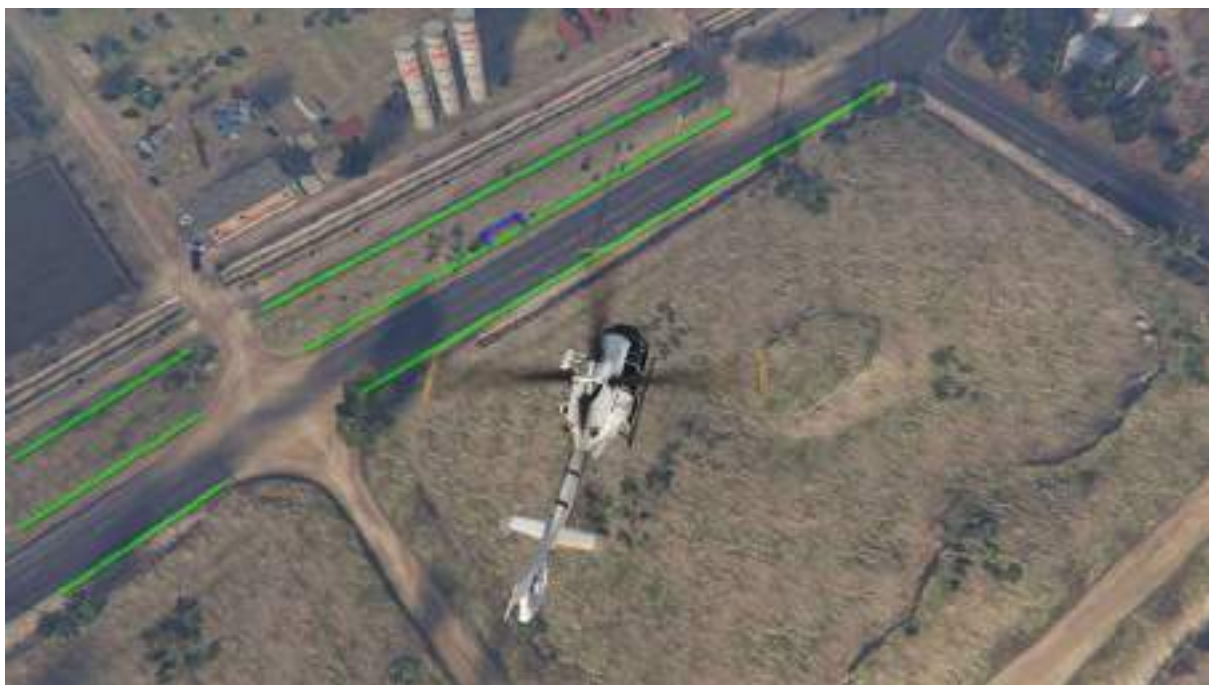
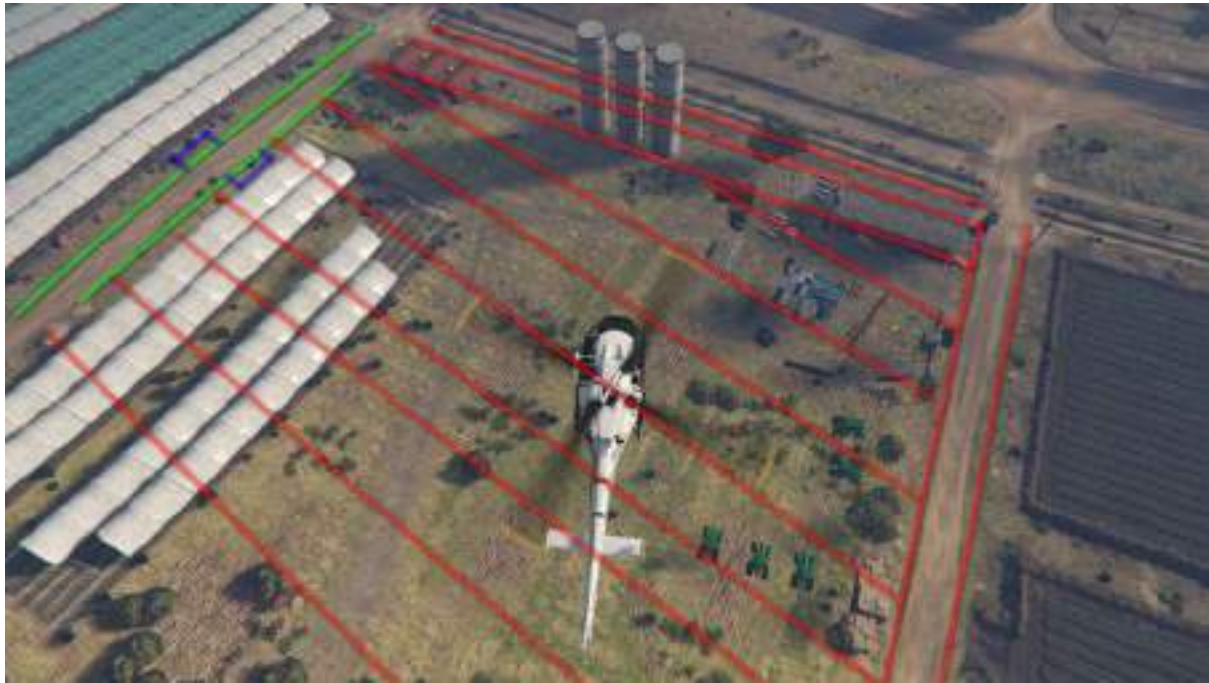
Note : Blue rectangles show the example of parking direction.



7.11 Farm 1

Green - parking is allowed for everyone;
Red and Everywhere else - no parking.

Note : Blue rectangles show the example of parking direction.



7.12 Farm 2

Green - parking is allowed for everyone;
Red and Everywhere else - no parking.

Note : Blue rectangles show the example of parking direction.

