



---

**Government Agencies**  
**BodyCam Validation Act**

---

***Released by The Department of Justice  
Version 2.0 on the 13th April, 2024***

Version 2.0  
**28 October 2024**

**Signed and Officiated by:**

*Daisuke Kambe*

**Daisuke Kambe  
Governor**

*Vasant Gawde*

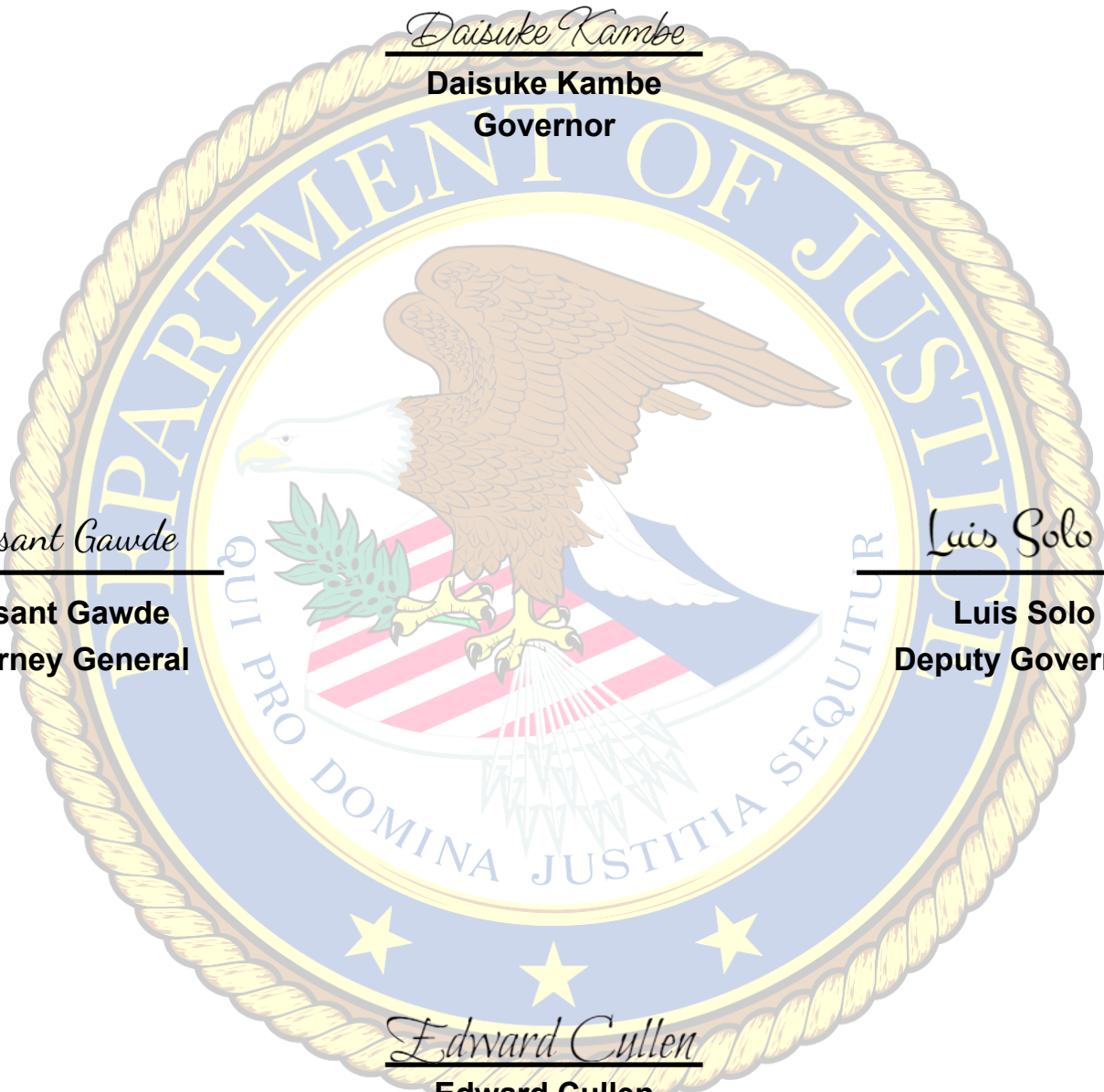
**Vasant Gawde  
Attorney General**

*Luis Solo*

**Luis Solo  
Deputy Governor**

*Edward Cullen*

**Edward Cullen  
Supreme Court Judge**



## **Article 1. General Provisions**

**1.1** This is an information leaflet that informs the reader about the law for validation of bodycam footage. It mentions the proper way of attaching, refreshing and saving a bodycam. Also it informs the reader about bodycam worn by standard Law enforcement agencies/officers.

**1.2** The leaflet must be considered standard/common protocol to consider a bodycam valid/invalid.

**1.3** This information leaflet will explain to the reader about how to validate their bodycam footage which should be always worn by State Organisation officers on duty and off duty as an undercover (only by leaders approval) if they want to. This leaflet also informs the reader on how to attach, refresh and save the bodycam properly to make it valid. This information leaflet will explain to the reader how they can use the Bodycam to validate recordings as evidence. Evidence can be described with examples such as, Law Enforcement Officers recording their duties, Citizens recording evidence of crimes or misconduct committed by another citizen or Law Enforcement Officer and Judiciary Officials recording evidence of a court proceeding.

## **Article 2. Rule for validation of the Official Bodycam for State organizations**

**2.1.** This Act will be applicable to the members of the following state organizations-

- Government (USSS/IRS/FPPF/DOC/HR/IA/DOJ)
- Federal Investigation Bureau
- San Andreas National Guard
- San Andreas Highway Patrol
- Los Santos Police Department
- Emergency Medical Services

**2.2.** For the Bodycam to be valid, following rules must be abided:

### **2.2.1 Rule of Starting the bodycam-**

**Important: Bodycam commands does not need to be perfectly accurate to this document, as long as they make sense, they should be considered valid.**

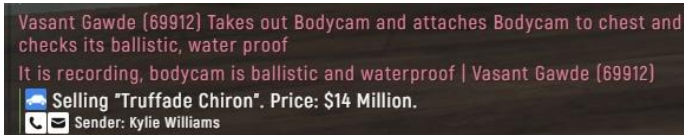
Officers must attach the bodycam near a desk/reception/armory/locker or any car/helicopter from the officers current organization (Needs to have an open trunk of that car).

**\*\*Very important- Attaching the body cam inside of a transport deems the bodycam invalid.**

### Example of attaching the bodycam (on duty):

/me Takes out Bodycam and attaches Bodycam to chest and checks its ballistic, water proof

/do It is recording, bodycam is ballistic and waterproof



Vasant Gawde (69912) Takes out Bodycam and attaches Bodycam to chest and checks its ballistic, water proof  
It is recording, bodycam is ballistic and waterproof | Vasant Gawde (69912)  
Selling "Truffade Chiron". Price: \$14 Million.  
Sender: Kylie Williams

**\*\*NOTE:** *If you Change your clothes or die and spawn at hospital, you need to reattach your bodycam again according to Article 2.2.1.*

### 2.2.2 Bodycam Refreshing rule-

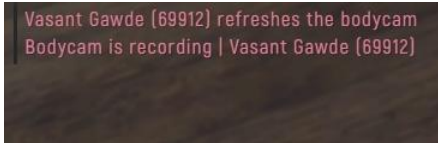
The officers must refresh their bodycam, if they get unconscious or if you get Code A, and if 8 hours have passed after attaching you need to refresh your bodycam.

**\*\*Note:** Must do every 4 hours of recording & When you have a bad dream & When you got a Code A.

### Example of refreshing the bodycam:

/me refreshes bulletproof/waterproof bodycam

/do bodycam is recording



Vasant Gawde (69912) refreshes the bodycam  
Bodycam is recording | Vasant Gawde (69912)

(Refreshing Bodycam before a situation can make the bodycam valid , only if the officer has a valid starting of the bodycam as per [2.1.1](#))

### 2.2.3 Saving the Bodycam rule-

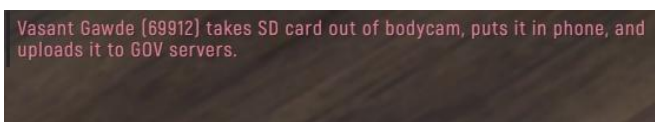
The officers need to save the bodycam at the end of the bodycam, it needs to be a continuous recording from the refreshment part. That means the officers must save their bodycam at the end of the bodycam in the same footage in which he refreshed, otherwise it is deemed invalid.

**\*\*Note :** You can not also save your bodycam inside a transport. And saving of the bodycam should be done on a USB stick or cloud server of the officers organisation only.

**\*\*Very Important:** Bodycam commands does not need to be perfectly accurate to this document, as long as they makes sense, they should be considered valid.

### Example of saving the bodycam:

/me takes SD card out of bodycam, puts it in phone, and uploads it to GOV/FIB/NG/LSPD/SAHP/EMS servers.



Vasant Gawde (69912) takes SD card out of bodycam, puts it in phone, and uploads it to GOV servers.

## 2.2.4 Attaching Bodycam Rule (Undercover):

The undercover officers must attach near a desk of any car/helicopter (Needs to have an open trunk) or a desk/reception/armory/locker of the officers current organization.

**\*\*Very important- Attaching your bodycam inside of a transport is considered invalid**

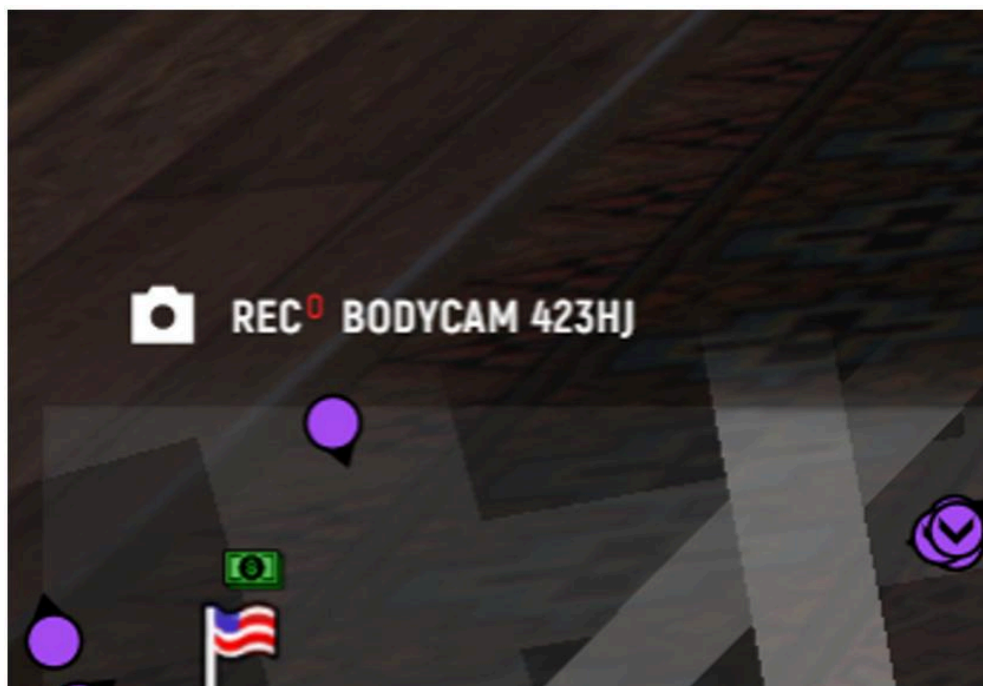
Example of attaching the bodycam (off duty/Undercover):

/me Takes out Bodycam and attaches Bodycam to Belt, hides it and checks its ballistic, water proof  
/me makes sure it is recording and checks for the red light  
/do it is recording, and its ballistic, water proof

Ace Verlice (68192) makes sure it is recording and checks for the red light  
It is recording, is ballistic and water proof. | Ace Verlice (68192)  
Ace Verlice (68192) takes out bodycam and attaches it to belt, hides it, checks  
its ballistic and water proof  
Ace Verlice (68192) makes sure it is recording and checks for the red light  
It is recording, is ballistic and water proof. | Ace Verlice (68192)

## Article 3. Rule for validation of the Grand pro bodycam

**3.1** Once a GrandPro Bodycam is activated, it is situated on the chest of the user and a red light is displayed to show it is recording. The red light is displayed like so:



**3.2** The red light as shown above validates the authenticity of the recording so that it can be used as evidence. No other means of validation is required, provided the recording is made with the red light on.

**3.3** A Code-A will require the user to utilize a new GrandPro Bodycam.

**3.4** A user being rendered unconscious will require the user to utilize a new GrandPro Bodycam.

**3.5** A user who wakes up in the Hospital will require the user to utilize a new GrandPro Bodycam.

#### **Article 4. Taking the footage from your GrandPro Bodycam.**

**4.1** Users of the GrandPro Bodycam will have to extract the footage from their bodycam.

**4.2** The GrandPro Bodycam will save all footage to the internal Memory Card. This Memory Card can be removed like so:

**Akio Verlicee (8559) Ejects Memory Card from the GrandPro Bodycam**

**4.3** The bodycam must be saved inside a SSD